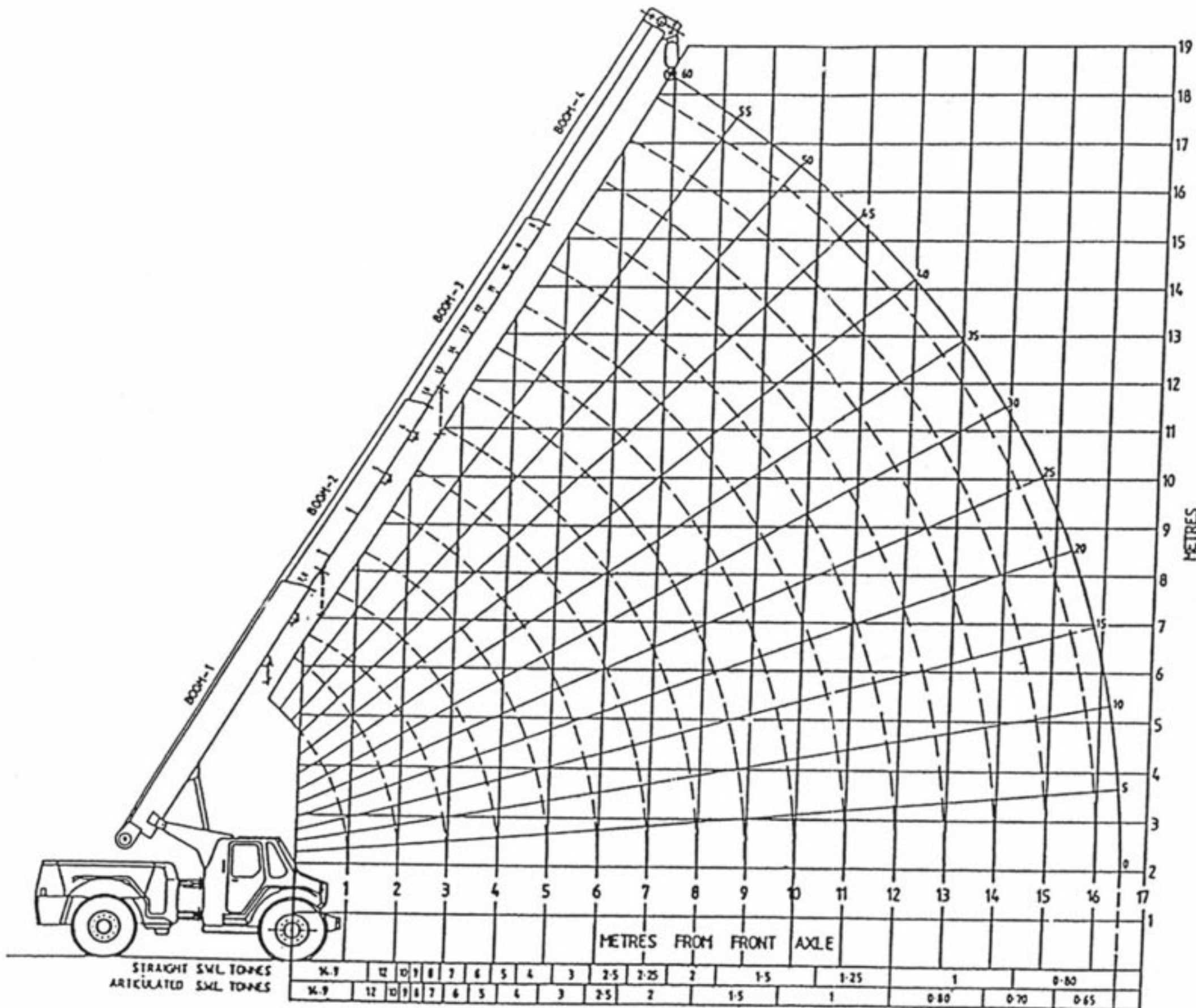


LOAD CHART "U"



Operator Information

- Load Chart**-Shows operating range and safe working loads at various reaches and applies to crane use on stable and level surface in accordance with Aust. Std. 2550-1982.
- Lift and Carry**- Operation is permitted & the S.W.L. shall be carried on the fully retracted boom, as close to the ground as possible, with tyres correctly inflated and at speeds not in excess of 5 k.p.h.
- Type of Rope**-11mm-18 x 7FC- 180m long.
- Hook block capacity**-
2 Falls- 11mm rope -3600 kg
4 falls- 11mm rope - 7200 kg
6 falls - 11mm rope - 10800 kg
Block weight - 90kg
- Tyre pressures**-
Front 790 kpa
Rear 310 kpa
- Standards**- The crane complies with the requirements of Aust Std. 14 18 part 5 1986 and has been designed for use by trained and approved operators for general hook hoist duties and shall not be used for hoisting personnel unless specifically approved of by the statutory authority.
- Note**- Interpolation of load chart is not permitted
- Note**- Load chart based on 0.66 of tipping load and includes weight of fall block, rope, hook, slings, etc.
- Note**- It is safe to telescope loads within the limits of the charts with the exception of a limit of above 8 tonnes and 55 degree boom angle.